

Testing 422 Project 2 in the classroom

The wall in the classroom should usually be left in a mode for you to test your Project 2 applications, and in general if it isn't you should ask one of the evl students or Luc or Lance.

Here are some quick things to help make sure the wall is in the right configuration.

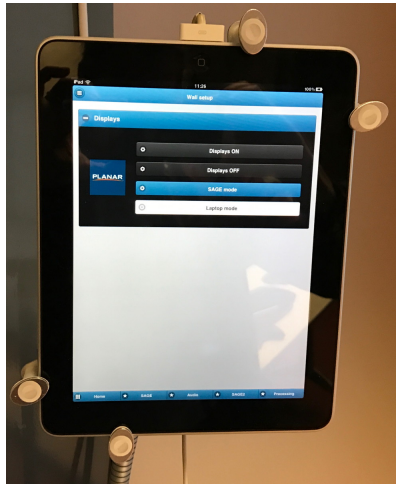
The wall is controlled from the cluster of computers and iPads to the left of the wall. You should not need to use the mouse and keyboard for the wall itself.



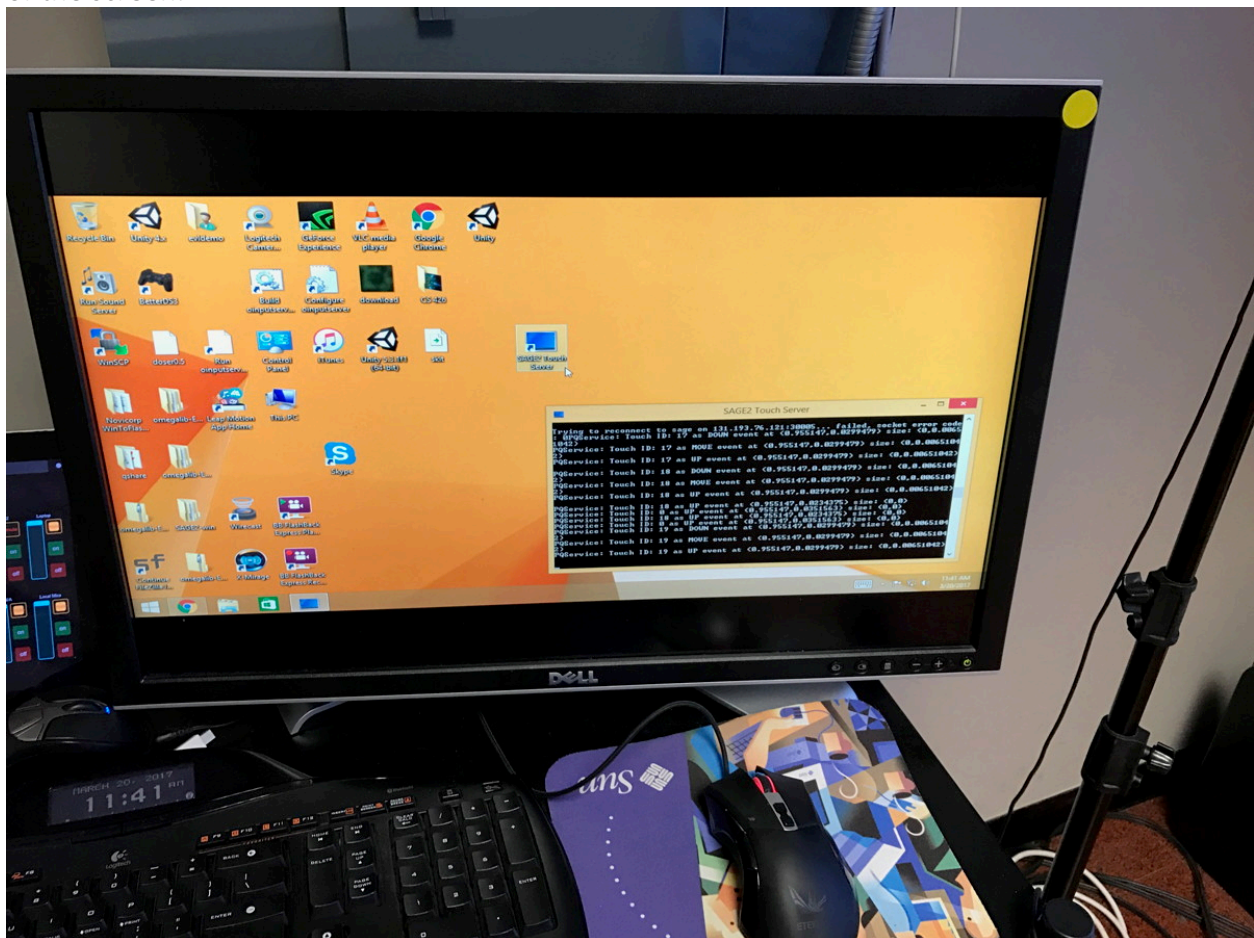
Make sure the screens of the big wall are on and the wall is in SAGE mode (you should see the typical grey Chicago skyline SAGE2 backdrop and not the windows desktop).



If not use the vertical iPad to the left of the big wall. In the Setup Panel touch 'Displays On' and touch 'SAGE mode'

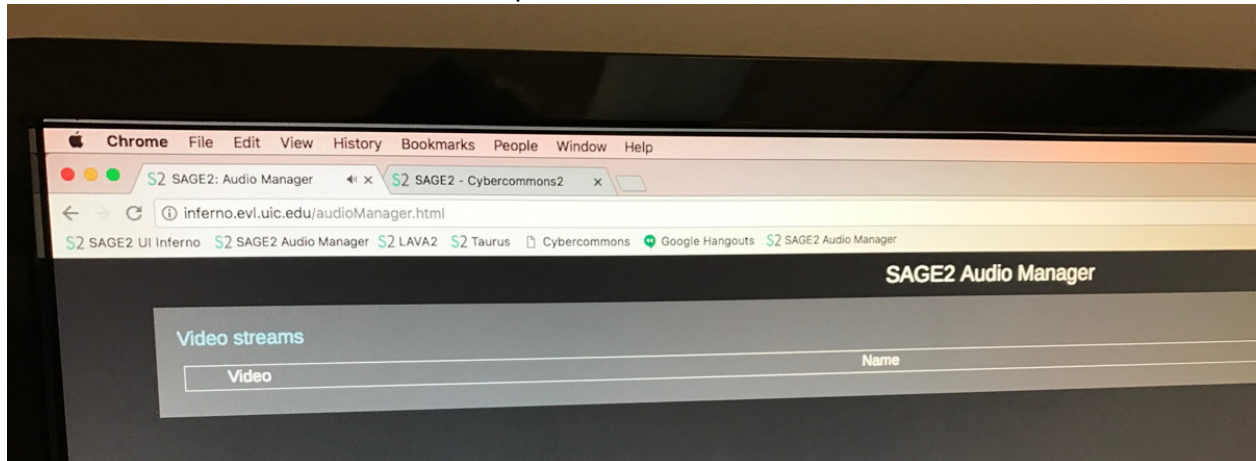


Make sure the touch server is running on the rightmost PC. You should see a terminal window named SAGE2 Touch Server. If not, double-click on the SAGE2 Touch Server icon in the middle of the screen.



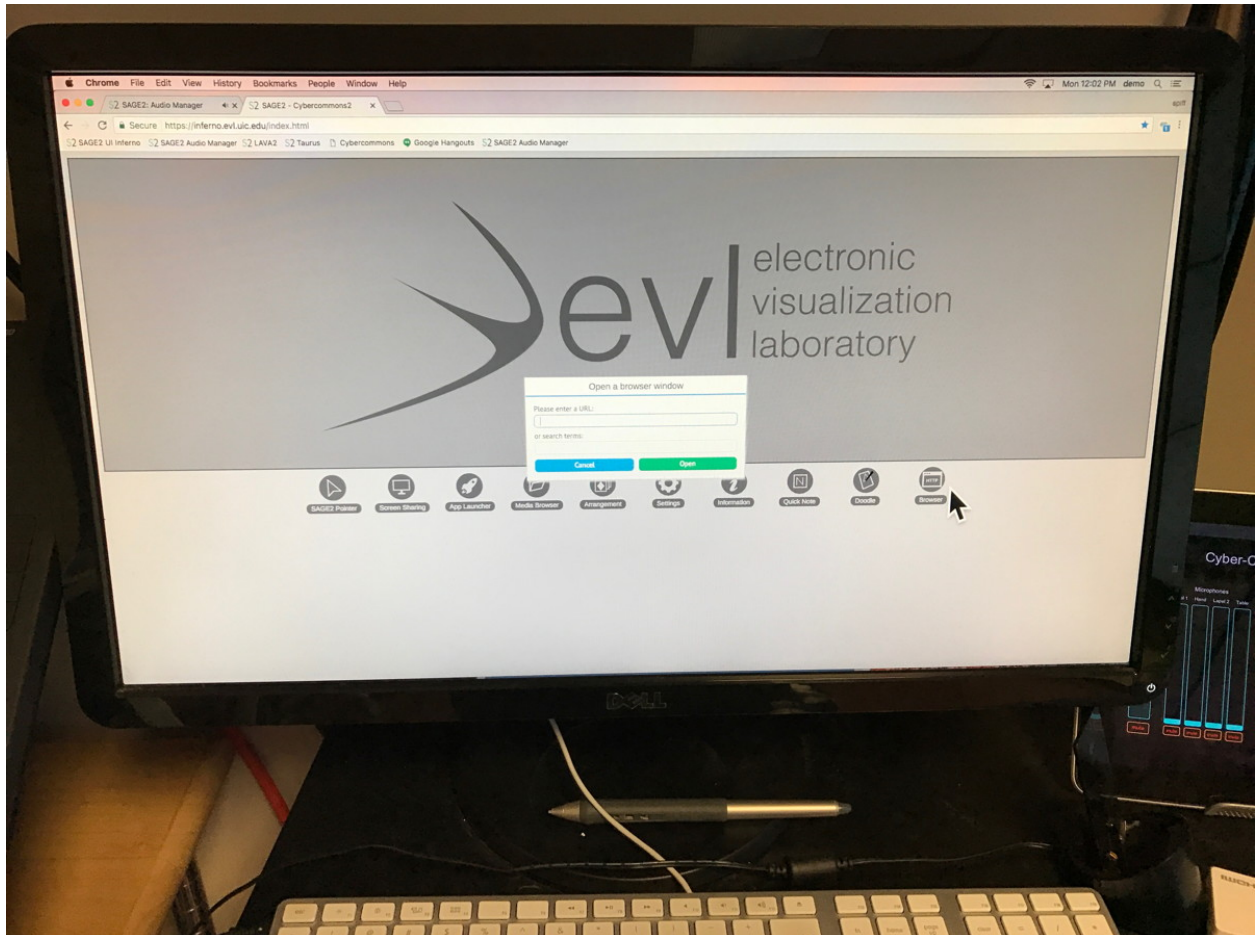
Make sure sound is working. On the middle Mac Chrome should be running and one of the tabs should be SAGE2: Audio Manager.

If not, start Chrome, create a new tab and click the SAGE2 Audio Manager bookmark. You should hear a blues riff when it starts up.



Now things are ready for you to start testing your application.

On the middle Mac with the Dell monitor, open another tab in the Chrome browser and click on the SAGE2 UI Inferno bookmark to bring up the SAGE UI interface for the big wall. Click on the Browser icon in the lower right corner and enter the URL for your mirror application.



You should see a browser window appear in the upper left corner of the big wall. Click and drag it to where you want it to be and the size that it should be for the Mirror (4 tiles big, half a tile off the bottom of the screen)

You can also right-click on the browser window in Chrome to bring up some other options (reload, etc.)

When you are done testing you can click on the browser window in the SAGE UI webpage and use the backspace / delete key to delete it or right-click on the browser window in the SAGE UI webpage to bring up a menu to delete the window