

# content? + form?

?  
new vs existing  
collaborative concepts  
cohesive theme  
individual projects under one concept umbrella  
collection of VR worlds  
Participants can interact remotely  
Shared VR space  
24/7 free accessible

?  
VR gallery  
online gallery  
Portal UI  
Design experimentation  
Gallery partners  
external partners, SAIC ?  
Internal partners, UIC?

# brick and mortar exhibitions

# One-way colour tunnel by Olafur Eliasson MCA Chicago 2009





## U-505 at the Museum of Science and Industry, 2004



# Infinite Variety: Three Centuries of Red and White Quilts, American Folk Art Museum, 2011





# Think: An Exploration Into Making the World Better, at Lincoln Center, 2011



# Science Storms - Museum of Science and Industry, Chicago 2010





emmanuelle\_moureaux





















ESCHER  
X NENDO

ESCHER X NENDO  
EXHIBITION  
MARCH 10 - APRIL 10  
2011









**Section 101**  
The first section of the exhibition is dedicated to the early years of the company's history, from its founding in 1900 to the 1950s. It features a series of panels and artifacts that trace the company's growth and evolution over time.



**Section 102**  
The second section of the exhibition focuses on the company's expansion into international markets during the 1960s and 1970s. It highlights key milestones and the challenges faced by the company as it grew globally.











Text on the left informational panel, partially obscured by the diagram above it.

Text on the right informational panel, appearing as a vertical column of small text.











# VR exhibitions

# Alive on the Grid: Ars Electronica 2001 by EVL faculty and students



EVL: Alive on the Grid, 2001

Related Videos

Autoplay next video





Asymmetry 0.500

Right 50%

50%

Attention

50%

Relaxation

AF3

AF4

Fp1

Fp2

AF7

AF8

Select Channel

AF3

AF4

Fp2

AF7

Training Room

Mind Care

Mind Master

Quit

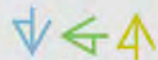
# Museum partners



# ABOUT

wndr museum is an ever-evolving immersive art and technology experience that is designed to ignite the curiosity that exists within and around each of us. Consider wndr to be a cultural and artistic hub

VGA STANDS WITH THE PROTESTERS THROUGHOUT CHICAGO AND BEYOND WHO ARE WORKING TO COMBAT SYSTEMIC RACISM AND WIDESPREAD RACIAL VIOLENCE. [CLICK HERE FOR INFORMATION ON HOW TO SUPPORT #BLACKLIVESMATTER.](#)



video game art  
gallery

[ABOUT](#) [EDUCATION](#) [EXHIBITIONS](#) [VGA READER](#) [VGA ZINE](#) [PRINTS](#) [SUPPORT](#) [CONTACT](#) [Instagram](#) [Facebook](#) [Twitter](#) [Email](#) [Search](#)



## Featured Past Events





33 E. Washington St.



## EVENTS

### Upcoming Events

### Past Events

[Events](#) [Upcoming Events](#)

# Upcoming Events



## Contact

### Art and Exhibition Hall

1st Floor, 400 South Peoria Street (at Van Buren Street)

Phone: (312) 996-6114 | [gallery400@uic.edu](mailto:gallery400@uic.edu)



GRADUATE  
COLLEGE



# Ignite Your Future



[Deadlines](#)



[Academic Dates](#)



[International Teaching Assistants](#)



[Covid-19](#)





# Content+

# Image of Research



Graduate College

[UIC.edu](#) [Campus Map](#)

[Faculty & Staff Resources](#) [Alumni](#) [+Give](#) [Q](#)

[ADMISSIONS](#)

[FUNDING & AWARDS](#)

[PROGRAMS](#)

[DIVERSITY](#)

[ACADEMICS](#)

[ABOUT US](#)



**KNEEL**

Submitted by: Kaleb Dean



# Image of Research Current Exhibit

CARLI digital collections

[home](#)

[collections](#)

[about](#)



## The Image of Research (University of Illinois at Chicago)

[Collection home](#)

[Browse collection](#)

[Back to CARLI Digital Collections](#)

[Favorites](#) | [? Help](#)

Search  within results  [Advanced Search](#)

Browsing items in: The Image of Research (University of Illinois at Chicago)

(363 results)

Sort by: [Title](#) | [Display Options](#) | [Save to favorites](#)

1 2 ... 19 [Next](#)

Display: 20 |  Check/uncheck all

Narrow your search by:

- [Discipline](#)
- [Award](#)
- [Creator](#)



10/16/07  
9:15pm, Target,  
1154 S Clark St,  
Chicago, IL



13 Hours at  
Once



20 Foot  
Canvas



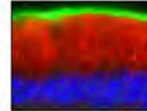
3D Printed  
Human Spinal  
Column



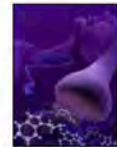
[recon]Figured  
Landscapes



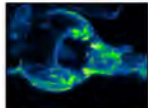
"Little Boxes"  
on the Beachfront



"Mermaid hair"  
Microtubules



A Case of the  
Blues: Serotonin  
toxicity caused by  
the use of  
methylene blue  
and  
antidepressants



A Fruit Fly's  
Life



A Nanoscale  
Forest Seen  
Through a Big



A New  
Beginning



A Site Plan for  
the Institute of  
Urban Studies



A Walk  
through the  
Countryside



Abandoned  
Sugar Mill at  
Laganai, Belize



Aberrations



Acid Reflux



more content +